



» Elevation D

## ADDISON

2,507 sf » 3 - 4 bedrooms,  
2½ - 3½ baths

The adaptable Addison is an entertainer's dream. The stunning central space adjoins a full-service kitchen that bridges formal and informal dining spaces, and can unfold in all directions to include a flex room with two-way fireplace and a spacious loggia with optional outdoor kitchen and fireplace. This inviting home delivers a wealth of additional options. With a 2 to 4-car attached garage, 3 to 4 bedrooms, 2½ to 3½ baths and extra second floor storage or living space — the possibilities are endless.



Elevation B  
Optional Entry



» Elevation B

Elevations shown with optional garage door design.



» Elevation C



arteva.com

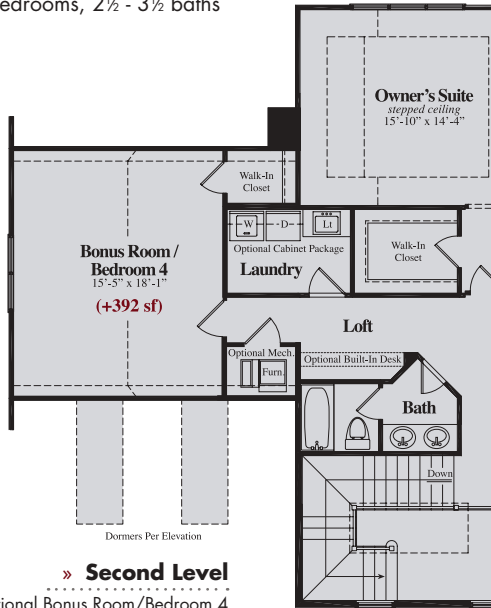
586-797-9628

The elevation renderings are the artist's conception and may be shown with available options. We cannot provide any warranties or representations that the actual and depicted elevation will not differ. See your sales associate for details.



# ADDISON

2,507 sf » 3 - 4 bedrooms, 2½ - 3½ baths

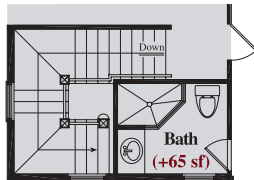


» **Second Level**

Optional Bonus Room/Bedroom 4  
Available with 3 or 4-Car Garage Options Only

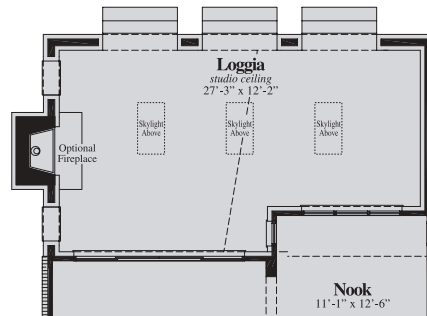


» **Second Level**



» **Second Level**

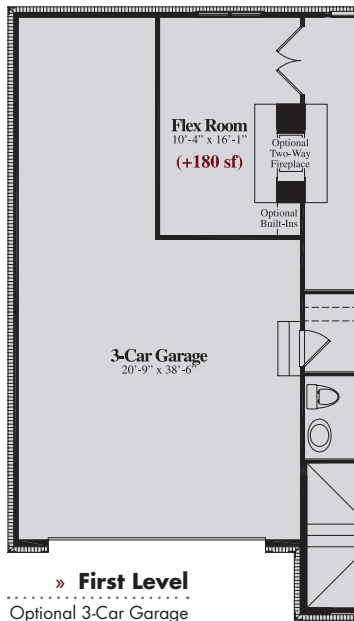
Optional Bedroom 3 Bath



» **First Level**  
Optional Loggia

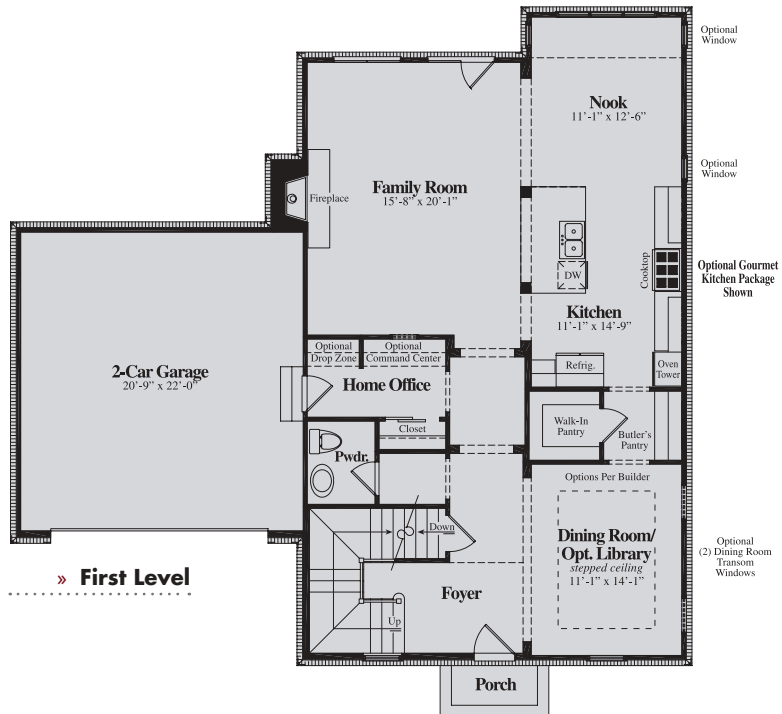


Optional  
Outdoor Kitchen



» **First Level**

Optional 3-Car Garage



» **First Level**



arteva.com