

**PRELIMINARY  
DESIGN CONCEPTS**

» **Elevation B**

## **MERITAGE SERIES**

### **STRATFORD**

1,465 sf » 2-3 bedrooms, 2 baths

The Stratford has all the characteristics that make a house a home. Owners enjoy all the benefits of first-floor living in these thoughtfully-designed spaces, choosing additional, personal options like skylights, a fireplace and extended owner's suite or a den with built-ins and a bay window for watching the world go by. With an attached garage that opens onto a laundry room and a side-by-side kitchen and breakfast nook, families can work together on the daily and nightly activities that make some of the fondest memories.



[arteva.com](http://arteva.com)

**248-341-3462**



» **Elevation A**



Elevations shown with optional garage door design.

The elevation renderings are the artist's conception and may be shown with available options. We cannot provide any warranties or representations that the actual and depicted elevation will not differ. See your sales associate for details.

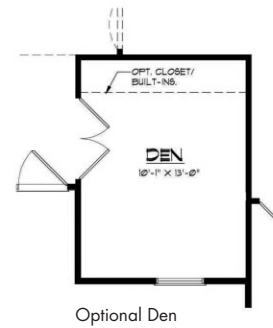
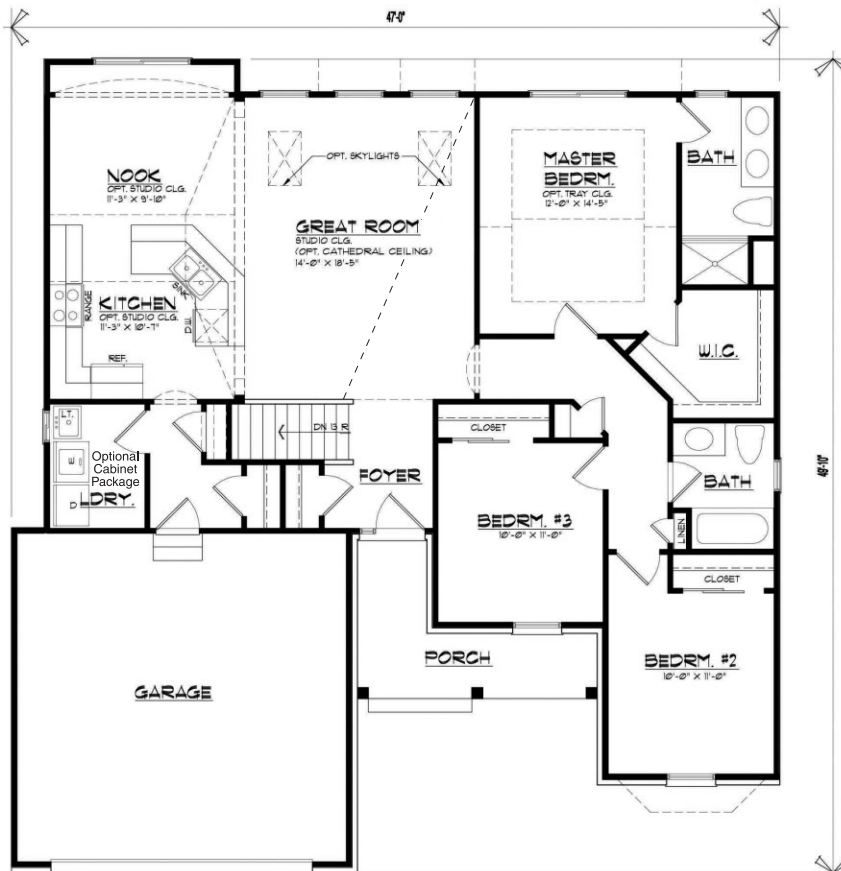


# MERITAGE SERIES

## STRATFORD

1,465 sf » 2-3 bedrooms, 2 baths

### PRELIMINARY DESIGN CONCEPTS



Optional Den



Optional Bay Window  
(+12 SF)

» **First Level**



arteva.com