

**PRELIMINARY
DESIGN CONCEPTS**

» Elevation C

Shown with Optional 3-Car Garage

MERITAGE SERIES

CARRIGAN III

1,803 sf » 4 bedrooms, 2½ baths

The family-functional layout of the Carrigan III begins with an open foyer which leads to a roomy family and dining area that invite a warm sense of harmony. With the clear flow of the large kitchen, easy access to the 2 or 3-car garage is just steps away. The upstairs collection of bedrooms has the flexibility to meet each family member's needs, with an owner's suite that proves a welcome retreat complete with walk-in closet and luxurious bath. The Carrigan III will turn heads with its intelligent floor plan and exterior details.



arteva.com

248-341-3462



» Elevation A



» Elevation B

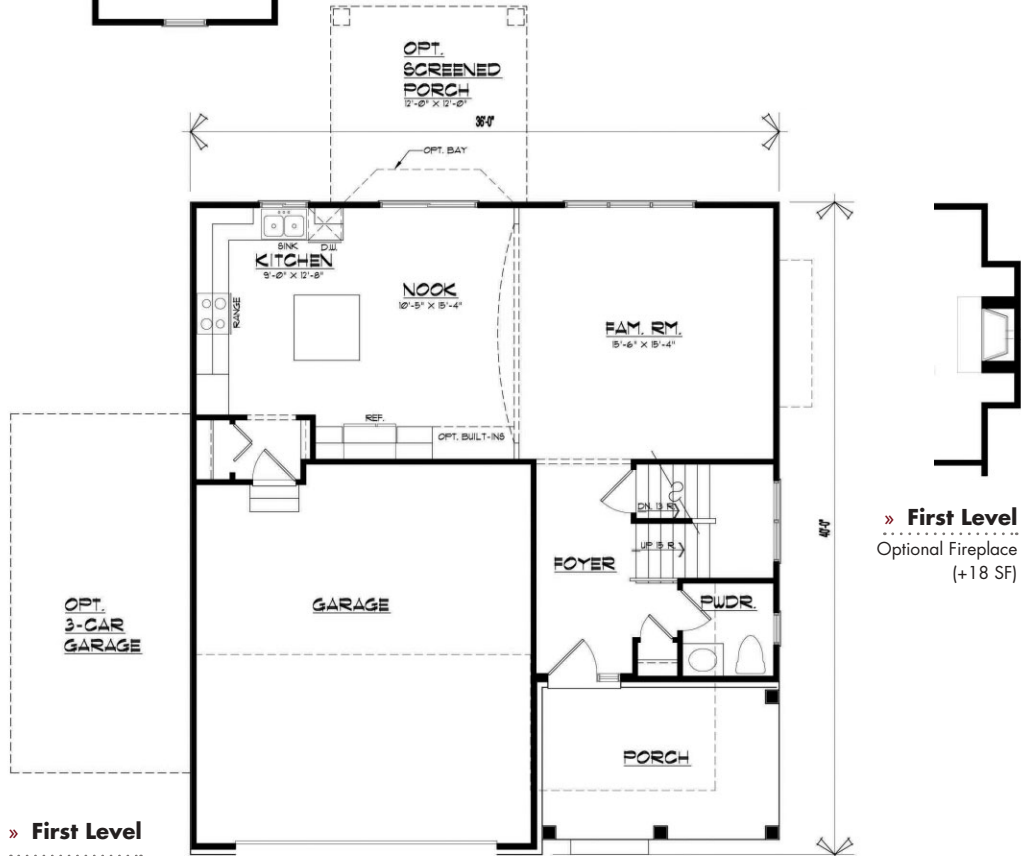
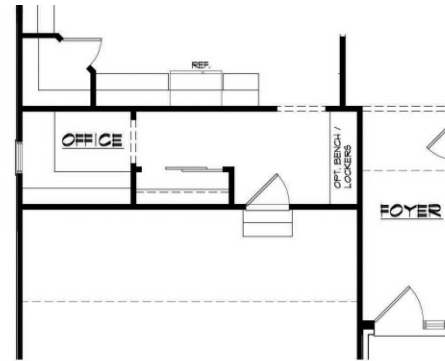
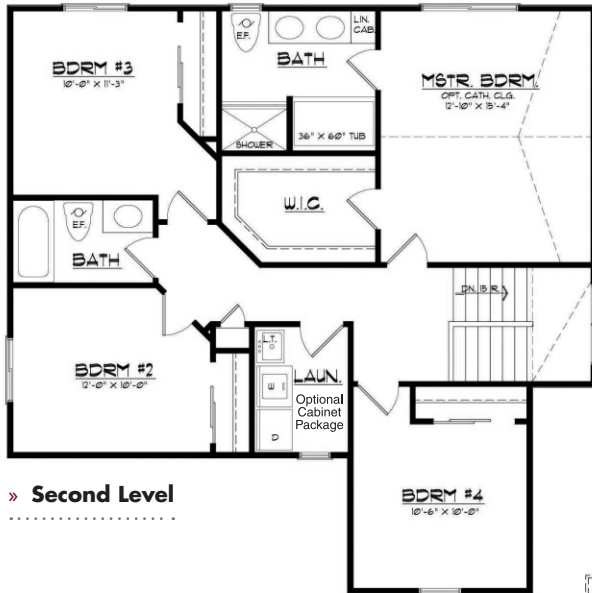
Elevations shown with optional garage door design.

MERITAGE SERIES

CARRIGAN III

1,803 sf » 4 bedrooms, 2½ baths

PRELIMINARY
DESIGN CONCEPTS



arteva.com