

PRELIMINARY
DESIGN CONCEPTS



» Elevation B

MERITAGE SERIES

ADDISON II

2,367 sf » 3 - 4 bedrooms,
2½ - 3½ baths

The Addison II brings versatility and artistry together in a classic colonial that compliments the neighborhood, yet still suits your family's unique personality. An attached 2-car garage leads directly into a home office with an optional drop zone for keeping book bags organized and a command center for searching the internet. The family room, nook and kitchen create a wonderful shared space for gathering friends and family, while the second floor features 3 to 4 bedrooms that include an elegant owner's suite.



arteva.com

248-341-3462



» Elevation A

Elevations shown with optional garage door design.

The elevation renderings are the artist's conception and may be shown with available options. We cannot provide any warranties or representations that the actual and depicted elevation will not differ. See your sales associate for details.

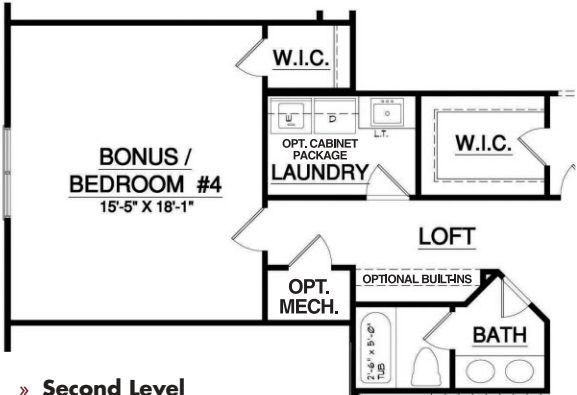


MERITAGE SERIES

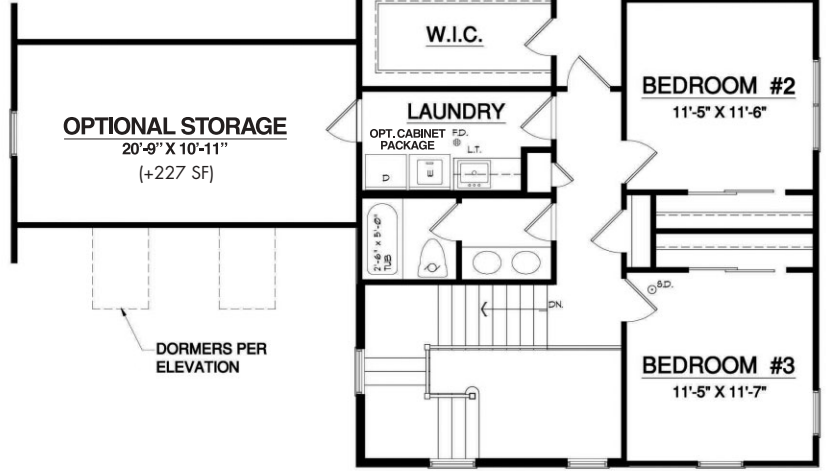
ADDISON II

2,367 sf » 3 - 4 bedrooms, 2½ - 3½ baths

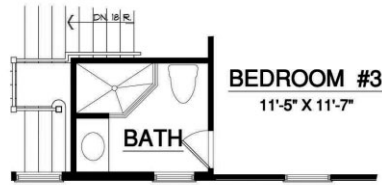
**PRELIMINARY
DESIGN CONCEPTS**



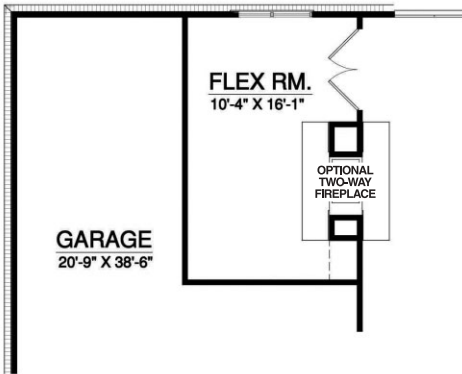
» **Second Level**
Optional Bonus Room
(+392 SF)



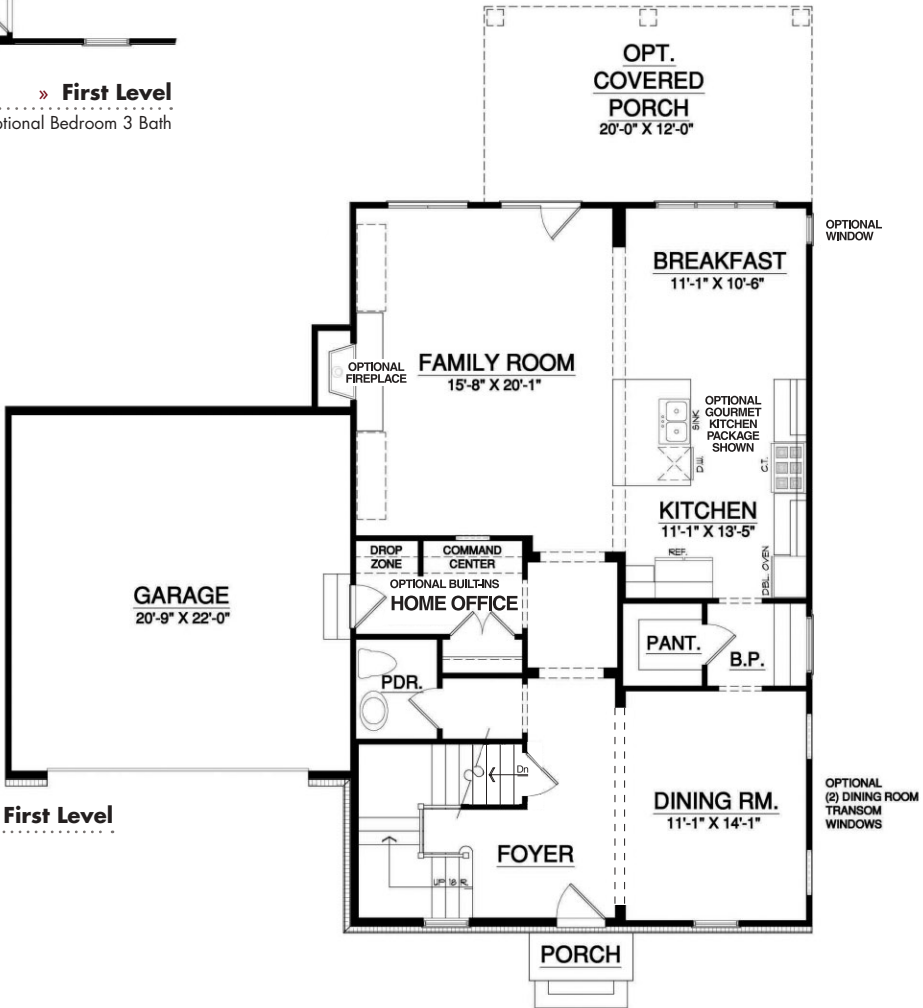
» **Second Level**



» **First Level**
Optional Bedroom 3 Bath



» **First Level**
Optional 3-Car Garage
with Flex Room



» **First Level**



arteva.com