



THE ASHFORD

1,526 sf » 1 - 3 bedrooms, 2 - 3 baths

Bold elements overhead create a contemporary aesthetic in the two bedroom Ashford. A tray ceiling makes a remarkable opening statement in the foyer, while the clipped cathedral ceiling in the great room heightens the symmetry of that space. A graceful arch brings the kitchen into play, defining its snack bar and two thresholds into the heart of the home. A cathedral ceiling in the owner's suite elevates the luxury of the room with its optional box-out window, two closets and five piece bath.



arteva.com

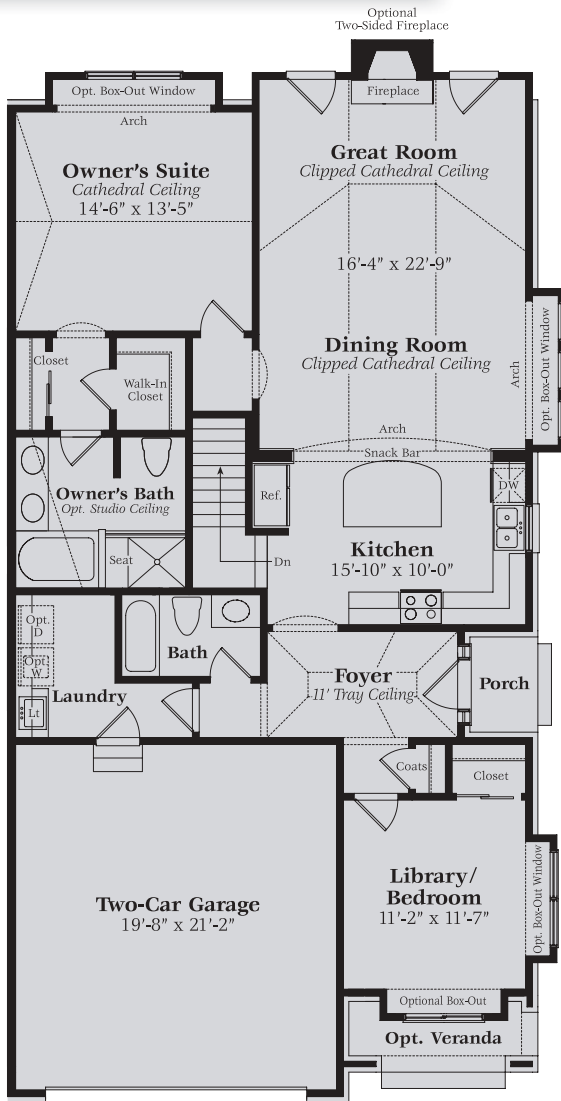
586-203-8411

THE ASHFORD

1,526 sf » 1 - 3 bedrooms, 2 - 3 baths



On select homesites, the optional deck and pergola features privacy lattice and an optional two-way fireplace — a centerpiece in the great room indoors as well as the extended living space outside.



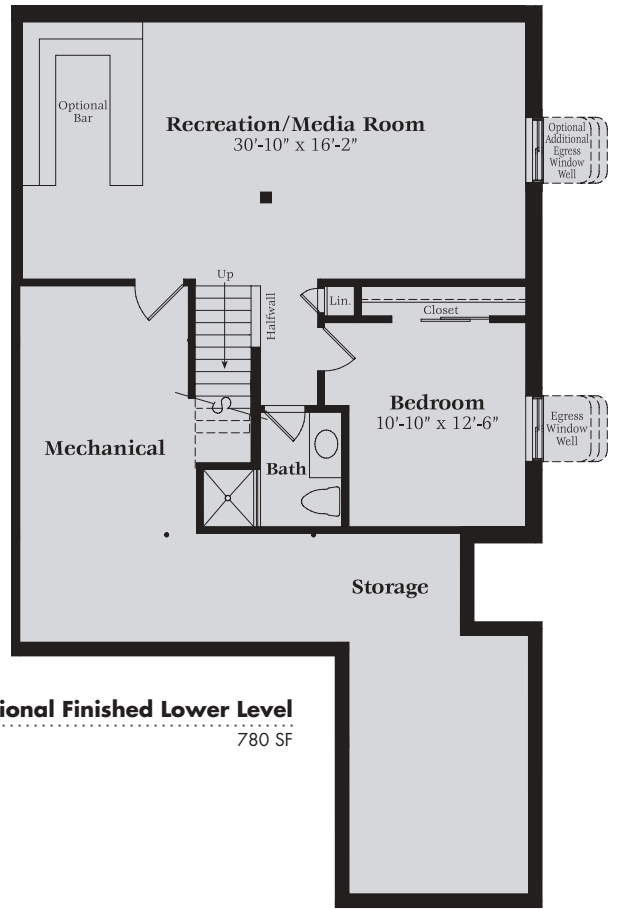
» **First Level**

1,526 SF

9 Ft. Ceiling First Floor

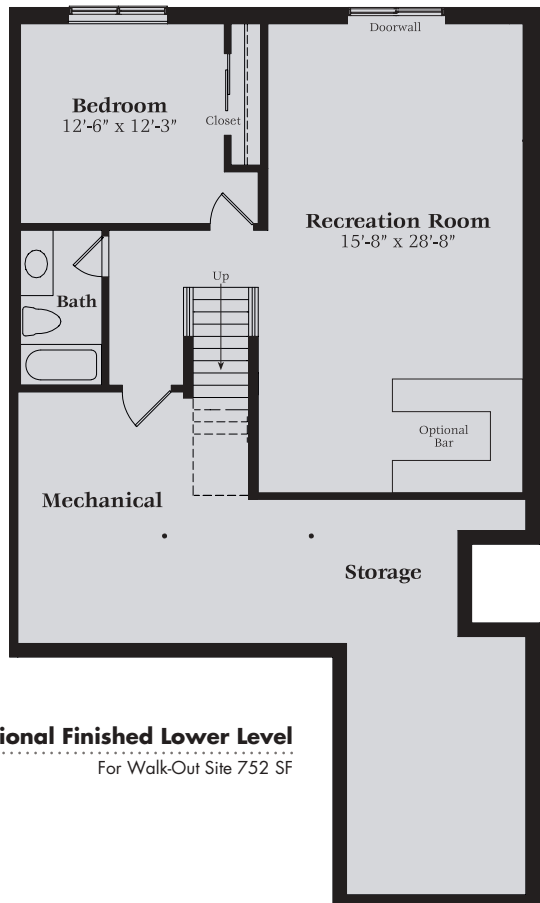


arteva.com



» **Optional Finished Lower Level**

780 SF



» **Optional Finished Lower Level**

For Walk-Out Site 752 SF

